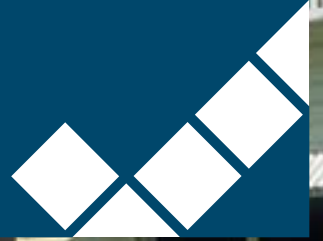


2007

product and colour range

New South Wales and South Queensland

Landscaping
Solutions



Santa Fe
paving



windsor
retaining wall



Canterbury
retaining wall



Euro
paving system



Got a slippery slope in your backyard? Is grass getting in your garden bed? Maybe you've got a muddy track to your clothesline. Or your gravel driveway is wearing thin. Whatever your problem, we've got the simple, elegant and affordable landscaping solution.

In this brochure you'll find the colours and specifications for our paving and retaining wall range. For more information, pick up one of our Landscaping Solutions Paving or Retaining Wall brochures, or talk to your nearest Landscaping Solutions Specialist.

BEFORE BUILDING RETAINING WALLS WE RECOMMEND CONSULTING YOUR LOCAL COUNCIL.

garden edging

Border Stone

Maximum height: 300mm
Average No. per linear metre: 4.65
Average No. per pallet: 240
Average kg per unit: 5.5 (182 per tonne)



Autumn Brown



Illiad



Sandstone



Santolina

Vintage Stone

Maximum height: 300mm
Average No. per linear metre: 5.0
Average No. per pallet: 240
Average kg per unit: 5.65 (177 per tonne)



Bondi Sand



Blue Mountain

retaining walls

Windsor

Maximum height: 1040mm*
Average No. per square metre: 26
Average No. per pallet: 120
Average kg per unit: 12.2 (82 per tonne)



Autumn Brown



Autumn Gold



Illiad



Sandstone



Santolina

Note: Autumn Gold colour not available for Windsor Cap

Windsor Cap

Windsor caps create the perfect finish.
Average No. per linear metre: 3.8
Average No. per pallet: 168
Average kg per unit: 6.8 (143 per tonne)

Border Stone



Vintage Stone



Windsor



Windsor Cap

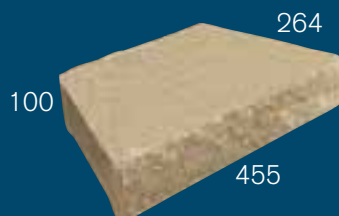


*If engineered with reinforcement these walls can be built higher than maximum heights stated. Please see our 'Hanson segmental retaining wall systems' brochure for more information.

Diamond



Diamond / Vertica Cap



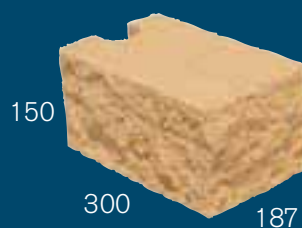
Vertica



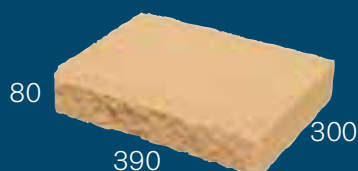
Canterbury



Canterbury corner



Canterbury cap



Diamond

Maximum height: 1200mm*

Average No. per square metre: 17

Average No. per pallet: 54

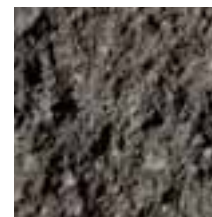
Average kg per unit: 29.33 (34 per tonne)



Autumn
Brown



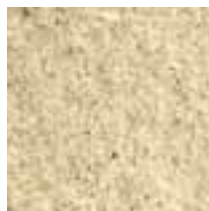
Autumn
Gold



Illiad



Sandstone



Santolina

Note: Diamond Cap only available in Illiad & Sandstone.

Vertica

Maximum height: 1000mm*

Average No. per square metre: 11.1

Average No. per pallet: 32

Average kg per unit: 38 (26 per tonne)



Illiad



Sandstone

Vertica Cap

Average No. per linear metre: 2.7

Average No. per pallet: 96

Average kg per unit: 19.2 (52 per tonne)

Canterbury

Canterbury is one of Hanson's latest retaining wall innovations, Canterbury gives you what you'd expect from a wall - an absolute vertical system with a complete natural appeal about it.

Maximum height: 980mm* (including the capping unit)

Standard unit

Average No. per square metre: 29.63

Average No. per pallet: 100

Average kg per unit: 14.2 (70 per tonne)

Capping unit

Average No. per lineal metre: 2.56

Average No. per pallet: 72

Average kg per unit: 18.9 (53 per tonne)

Corner unit

Average No. per pallet: 63

Average kg per unit: 17.2 (58 per tonne)

The approximate amount of aggregate required per square metre of wall is 0.39m³ of 10-20mm blue metal gravel (including backfill of wall and corefill of blocks)



Illiad



Sandstone



Santolina



Sienna

*If engineered with reinforcement these walls can be built higher than maximum heights stated. Please see our 'Hanson segmental retaining wall systems' brochure for more information.

Meadow Stone

Meadow Stone is a retaining wall system that comes in three different facing widths together with matching caps. These are all available in Bondi Sand and Blue Mountain. As a system Meadow Stone can be built to a maximum height of 810mm* (including the capping unit).

Average no. per m²: 8.3 pairs and 8.3 full units
No. of caps per L/m: 3.8

150mm and 250mm pair component:

150mm unit:

Dimensions: 150mm (w) x 150mm (h) x 200mm (d)

250mm unit:

Dimensions: 250mm (w) x 150mm (h) x 200mm (d)

The 150mm & 250mm components are sold as a pair

Approx. weight of a pair: 23kg (43.5 pairs per tonne)

Average no. of pairs per pallet: 60

400mm full component:

Dimensions: 400mm (w) x 150mm (h) x 200mm (d)

Approx. weight: 20.8kg (48 per tonne)

Average no. per pallet: 60

Cap component:

Dimensions: 300mm (w) x 60mm (h) x 200mm (d)

Approx. weight: 6.8kg (143 per tonne)

Average no. per pallet: 168

We recommend laying your Meadow Stone blocks in a random pattern throughout the wall.



Bondi Sand



Blue Mountain



Diamond Pro Stone Cut™

The new retaining wall on the block is Diamond Pro Stone Cut™. It is a multi-piece retaining wall system that allows you to create a more distressed looking, random appearance at great heights. As a system Diamond Pro Stone Cut™ can be built to a maximum height of 1100mm* (including the capping unit).

Average no. per m²: 5.55 pairs and 5.55 full units
No. of caps per L/m: 2.7

175mm and 275mm pair component:

175mm unit:

Dimensions: 175mm (w) x 200mm (h) x 300mm (d)

275mm unit:

Dimensions: 275mm (w) x 200mm (h) x 300mm (d)

The 175mm & 275mm components are sold as a pair

Approx. weight of a pair: 35kg (28.5 pairs per tonne)

Average no. of pairs per pallet: 36

450mm full component:

Dimensions: 450mm (w) x 200mm (h) x 300mm (d)

Approx. weight: 35kg (28.5 per tonne)

Average no. per pallet: 36

Cap component:

Dimensions: 455mm (w) x 100mm (h) x 264mm (d)

Approx. weight: 19.2kg (52 per tonne)

Average no. per pallet: 96

We recommend laying your Diamond Pro Stone Cut™ blocks in a random pattern throughout the wall.



Bondi Sand



Blue Mountain



Terrace

Maximum height: 1010mm*

Average No. per square metre: 10 (using a 200mm gap)

Average No. per pallet: 90

Average kg per unit: 13 (77 per tonne)



Autumn Brown



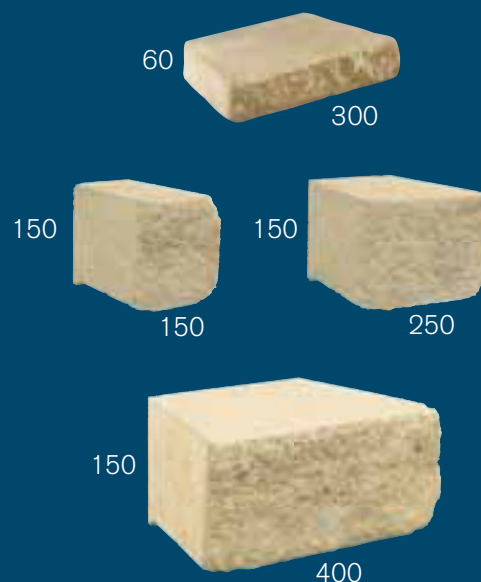
Autumn Gold



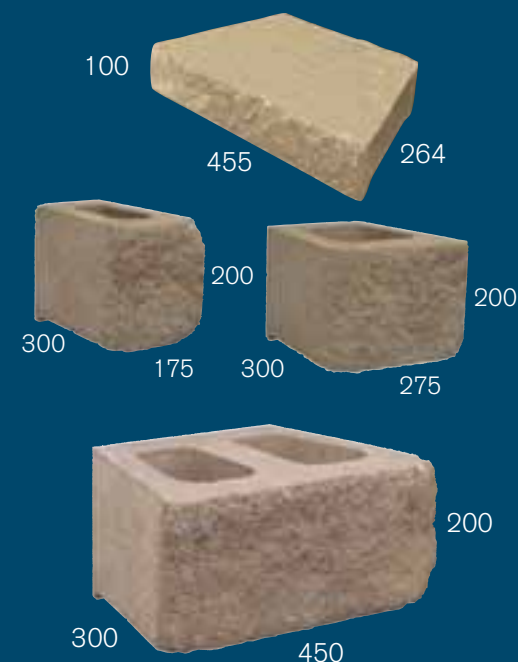
Illiad

*If engineered with reinforcement these walls can be built higher than maximum heights stated. Please see our 'Hanson segmental retaining wall systems' brochure for more information.

Meadow Stone



Diamond Pro Stone Cut™



Terrace



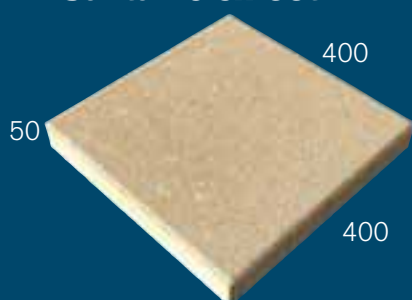
Cottage Brick



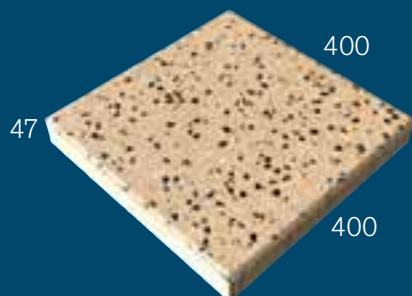
Cottage



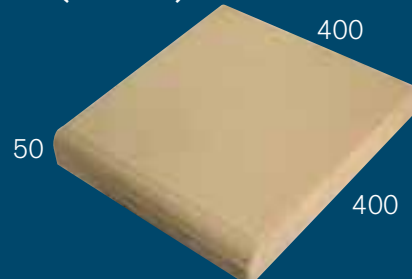
Santa Fe smooth



Santa Fe honed



Santa Fe Bullnose (moulded)



Santa Fe Bullnose (ground)



pavers

Cottage Brick

Average No. per square metre: 50
Average No. per pallet: 720
Average kg per unit: 2.25 (444 per tonne)

Cottage

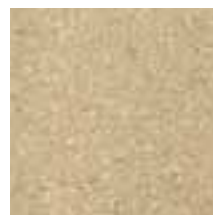
Average No. per square metre: 25
Average No. per pallet: 360
Average kg per unit: 4.48 (223 per tonne)



Autumn Brown



Illiad



Santolina

Santa Fe

Santa Fe comes in 2 finishes, Smooth and Honed. Smooth is a classic paver finish and Honed is polished. These pavers are salt resistant.
Average No. per square metre: 6.25
Average No. per pallet: 90
Average kg per unit:
• Smooth: 16.86 (58 per tonne)
• Honed: 16.40 (58 per tonne)

Santa Fe Bullnose

The Santa Fe range also comes in Bullnose for steps and pool surrounds. All Santa Fe colours are available in Bullnose.
Average No. per linear metre: 2.5
Average No. per pallet: 90
Average kg per unit:
• Moulded: 16.79 (58 per tonne)
• Ground: 16.34 (58 per tonne)

Smooth



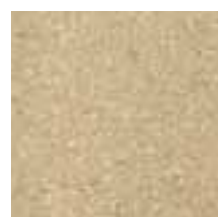
Autumn Brown



Illiad



Sandstone



Santolina



Cooloola Cream*

*Cooloola Cream available in NSW only.

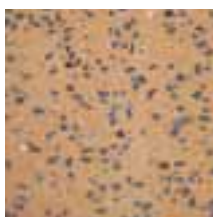
Honed



Autumn Brown



Illiad



Sandstone



Santolina



Cooloola Cream*

*Cooloola Cream available in NSW only.

Euro

Euro comes in 3 finishes: Classic, Slate and Grande. These pavers are salt resistant.

Average No. per square metre: 6.25

Average No. per pallet: 108

Average kg per unit:

- Classic: 14.30 (73 per tonne)
- Slate: 14.54 (73 per tonne)
- Grande: 12.69 (79 per tonne)

Euro Bullnose

Euro pavers also come in Bullnose for steps & pool surrounds. All Euro colours and finishes are available in Bullnose.

Average No. per linear metre: 2.5

Average No. per pallet: 108

Average kg per unit:

- Classic: 14.08 (73 per tonne)
- Slate: 14.42 (73 per tonne)
- Grande: 12.49 (80 per tonne)

Classic

Slate

Grande

Athens



Athens



Athens



London



London



London



Paris



Paris



Paris



Prague



Prague



Prague



Rome



Rome



Rome



Grass Pavers

For use in pathways, driveways, other light traffic areas, and as revetments units.

387 x 290 x 90mm

Average No. per square metre: 8.9

Average No. per pallet: 96

Average kg per unit: 14.3 (68 per tonne)

Available in natural only

mortarless block

Hi Stack™

An innovative mortarless system for DIY retaining walls, fences, BBQ's, party walls and other basic structures.

400 x 200 x 200mm

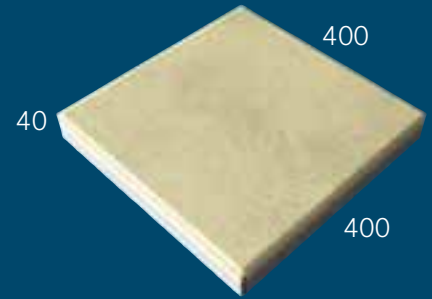
Average No. per square metre: 12.5

Average No. per pallet: 90

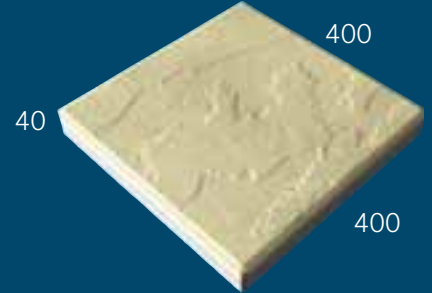
Average kg per unit: 21.31 kg (47 per tonne)

Available in natural only

Euro Classic



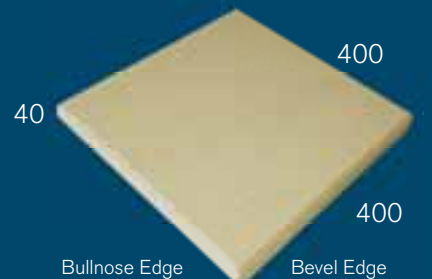
Euro Slate



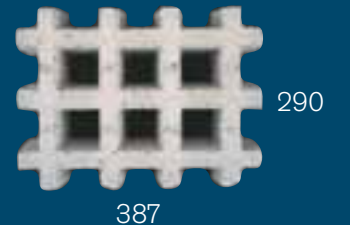
Euro Grande



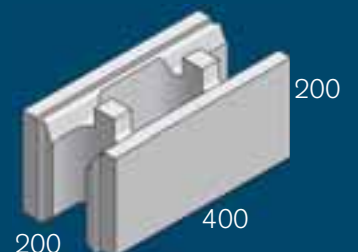
Euro Bullnose



Grass Pavers



Hi Stack



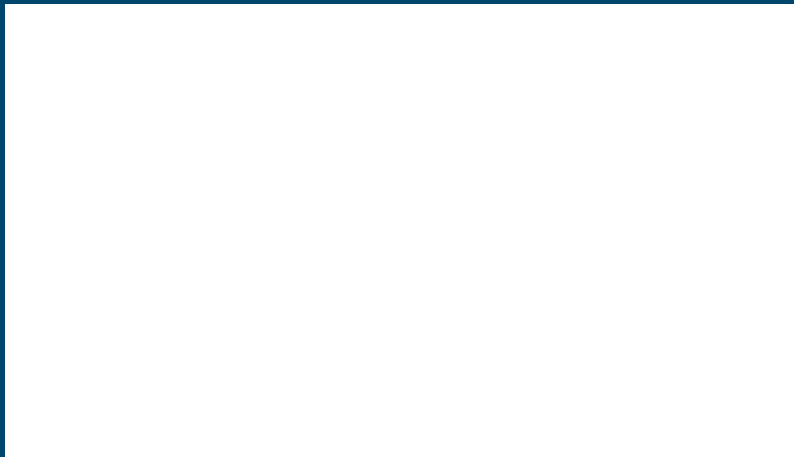
Hanson is one of the world's leading heavy building materials companies. We are the largest producer of aggregates - crushed rock, sand and gravel - and one of the largest producers of concrete products, clay bricks and concrete in the world. Our other principal products include asphalt and concrete roof tiles and we have operations in North America, the UK, Australia, Asia Pacific and Continental Europe.

In Australia, Hanson employs more than 3,600 staff and permanent contractors across more than 60 quarries, 240 concrete plants and a network of precast and masonry product sites. With global strength, national coverage and local presence, Hanson has a proud history of getting the job done.

Our commitment is to be the most reliable supplier, with the best team, whilst delivering leading customer support and solutions.

Our product range includes aggregates, concrete, masonry and precast concrete products, so if you need an innovative solution, we'll make it happen.

www.hanson.biz



Just as housing styles vary from state to state and area to area, the aggregates used in the production of Hanson pavers are subject to regional variations. Therefore the colours represented in this brochure are indicative only. We suggest sighting products first hand before ordering. For further advice, talk to your local Hanson Landscaping Solutions Specialist.